

## HIGHLIGHTS OF PRESCRIBING INFORMATION

These highlights do not include all the information needed to use WELIREG safely and effectively. See full prescribing information for WELIREG.

WELIREG® (belzutifan) tablets, for oral use  
Initial U.S. Approval: 2021

### WARNING: EMBRYO-FETAL TOXICITY

See full prescribing information for complete boxed warning.

- Exposure to WELIREG during pregnancy can cause embryo-fetal harm.
- Verify pregnancy status prior to the initiation of WELIREG.
- Advise patients of these risks and the need for effective non-hormonal contraception. WELIREG can render some hormonal contraceptives ineffective. (5.3, 7.2, 8.1, 8.3)

### RECENT MAJOR CHANGES

Indications and Usage, Advanced Renal Cell Carcinoma (RCC), Pheochromocytoma or Paraganglioma (PPGL) (1.3) -----05/2025  
Recommended Dosage (2.1) -----05/2025  
Warnings and Precautions (5.1, 5.2) -----05/2025

### INDICATIONS AND USAGE

WELIREG is a hypoxia-inducible factor inhibitor indicated:  
von Hippel-Lindau (VHL) disease

- for treatment of adult patients with von Hippel-Lindau (VHL) disease who require therapy for associated renal cell carcinoma (RCC), central nervous system (CNS) hemangioblastomas, or pancreatic neuroendocrine tumors (pNET), not requiring immediate surgery. (1.1)

#### Advanced Renal Cell Carcinoma (RCC)

- for treatment of adult patients with advanced renal cell carcinoma (RCC) with a clear cell component following a programmed death receptor-1 (PD-1) or programmed death-ligand 1 (PD-L1) inhibitor and a vascular endothelial growth factor tyrosine kinase inhibitor (VEGF-TKI). (1.2)

#### Pheochromocytoma or Paraganglioma (PPGL)

- for treatment of adult and pediatric patients 12 years and older with locally advanced, unresectable, or metastatic pheochromocytoma or paraganglioma (PPGL). (1.3)

### DOSAGE AND ADMINISTRATION

The recommended dosage of WELIREG in adult patients is 120 mg administered orally once daily with or without food. (2.1)

The recommended dosage of WELIREG in pediatric patients 12 years and older is based on bodyweight:

- Patients weighing  $\geq 40$  kg: 120 mg orally once daily
- Patients weighing  $< 40$  kg: 80 mg orally once daily

## FULL PRESCRIBING INFORMATION: CONTENTS\*

### BOXED WARNING: EMBRYO-FETAL TOXICITY

#### 1 INDICATIONS AND USAGE

- 1.1 von Hippel-Lindau (VHL) disease
- 1.2 Advanced Renal Cell Carcinoma (RCC)
- 1.3 Pheochromocytoma or Paraganglioma (PPGL)

#### 2 DOSAGE AND ADMINISTRATION

- 2.1 Recommended Dosage
- 2.2 Dosage Modifications for Adverse Reactions

#### 3 DOSAGE FORMS AND STRENGTHS

#### 4 CONTRAINDICATIONS

#### 5 WARNINGS AND PRECAUTIONS

- 5.1 Anemia
- 5.2 Hypoxia
- 5.3 Embryo-Fetal Toxicity

#### 6 ADVERSE REACTIONS

- 6.1 Clinical Trials Experience

#### 7 DRUG INTERACTIONS

- 7.1 Effects of Other Drugs on WELIREG
- 7.2 Effect of WELIREG on Other Drugs

#### 8 USE IN SPECIFIC POPULATIONS

- 8.1 Pregnancy
- 8.2 Lactation
- 8.3 Females and Males of Reproductive Potential
- 8.4 Pediatric Use
- 8.5 Geriatric Use
- 8.6 Renal Impairment
- 8.7 Hepatic Impairment
- 8.8 Dual UGT2B17 and CYP2C19 Poor Metabolizers

#### 10 OVERDOSAGE

#### 11 DESCRIPTION

#### 12 CLINICAL PHARMACOLOGY

- 12.1 Mechanism of Action
- 12.2 Pharmacodynamics
- 12.3 Pharmacokinetics
- 12.5 Pharmacogenomics

#### 13 NONCLINICAL TOXICOLOGY

- 13.1 Carcinogenesis, Mutagenesis, Impairment of Fertility

#### 14 CLINICAL STUDIES

- 14.1 von Hippel-Lindau (VHL) disease
- 14.2 Advanced Renal Cell Carcinoma (RCC)
- 14.3 Pheochromocytoma or Paraganglioma

### DOSAGE FORMS AND STRENGTHS

Tablets: 40 mg (3)

### CONTRAINDICATIONS

None. (4)

### WARNINGS AND PRECAUTIONS

- **Anemia:** Monitor for anemia before initiation of and periodically throughout treatment with WELIREG. Withhold WELIREG until hemoglobin  $\geq 8$ g/dL, then resume at the same or reduced dose or discontinue. For life threatening anemia, or for anemia requiring urgent intervention, withhold WELIREG until hemoglobin  $\geq 8$ g/dL and resume at a reduced dose or permanently discontinue WELIREG. (2.2, 5.1)
- **Hypoxia:** Monitor oxygen saturation before initiation of, and periodically throughout, treatment with WELIREG. For hypoxia at rest, withhold until resolved, resume at reduced dose, or discontinue depending on severity. For life-threatening hypoxia, permanently discontinue WELIREG. (2.2, 5.2)

### ADVERSE REACTIONS

**VHL disease:** Most common ( $\geq 25\%$ ) adverse reactions, including laboratory abnormalities, were decreased hemoglobin, fatigue, increased creatinine, headache, dizziness, increased glucose, and nausea. (6.1)

**Advanced RCC:** Most common ( $\geq 25\%$ ) adverse reactions, including laboratory abnormalities were decreased hemoglobin, fatigue, musculoskeletal pain, increased creatinine, decreased lymphocytes, increased alanine aminotransferase, decreased sodium, increased potassium, and increased aspartate aminotransferase. (6.1)

**PPGL:** Most common ( $\geq 25\%$ ) adverse reactions, including laboratory abnormalities were anemia, fatigue, musculoskeletal pain, decreased lymphocytes, increased alanine aminotransferase, increased aspartate aminotransferase, increased calcium, dyspnea, increased potassium, decreased leukocytes, headache, increased alkaline phosphatase, dizziness, and nausea. (6.1)

To report SUSPECTED ADVERSE REACTIONS, contact Merck Sharp & Dohme LLC at 1-877-888-4231 or FDA at 1-800-FDA-1088 or [www.fda.gov/medwatch](http://www.fda.gov/medwatch).

### DRUG INTERACTIONS

**UGT2B17 or CYP2C19 Inhibitors:** Monitor for signs and symptoms of anemia and hypoxia and reduce the dosage of WELIREG as recommended. (2.2, 7.1)

### USE IN SPECIFIC POPULATIONS

- **Lactation:** Advise not to breastfeed. (8.2)
- **Infertility:** May impair fertility in males and females. (8.3)

See 17 for PATIENT COUNSELING INFORMATION and Medication Guide.

Revised: 05/2025

16 HOW SUPPLIED/STORAGE AND HANDLING  
17 PATIENT COUNSELING INFORMATION

\*Sections or subsections omitted from the full prescribing information  
are not listed.

## FULL PRESCRIBING INFORMATION

### WARNING: EMBRYO-FETAL TOXICITY

- Exposure to WELIREG during pregnancy can cause embryo-fetal harm.
- Verify pregnancy status prior to the initiation of WELIREG.
- Advise patients of these risks and the need for effective non-hormonal contraception. WELIREG can render some hormonal contraceptives ineffective [see *Warnings and Precautions (5.3), Drug Interactions (7.2), Use in Specific Populations (8.1, 8.3)*].

## 1 INDICATIONS AND USAGE

### 1.1 von Hippel-Lindau (VHL) disease

WELIREG is indicated for treatment of adult patients with von Hippel-Lindau (VHL) disease who require therapy for associated renal cell carcinoma (RCC), central nervous system (CNS) hemangioblastomas, or pancreatic neuroendocrine tumors (pNET), not requiring immediate surgery.

### 1.2 Advanced Renal Cell Carcinoma (RCC)

WELIREG is indicated for the treatment of adult patients with advanced renal cell carcinoma (RCC) with a clear cell component following a programmed death receptor-1 (PD-1) or programmed death-ligand 1 (PD-L1) inhibitor and a vascular endothelial growth factor tyrosine kinase inhibitor (VEGF-TKI).

### 1.3 Pheochromocytoma or Paraganglioma (PPGL)

WELIREG is indicated for the treatment of adult and pediatric patients 12 years and older with locally advanced, unresectable, or metastatic pheochromocytoma or paraganglioma (PPGL).

## 2 DOSAGE AND ADMINISTRATION

### 2.1 Recommended Dosage

The recommended dosage of WELIREG in adult patients is 120 mg administered orally once daily.

The recommended dosage of WELIREG in pediatric patients 12 years and older is based on bodyweight:

- Patients weighing  $\geq 40$  kg: 120 mg orally once daily
- Patients weighing  $< 40$  kg: 80 mg orally once daily

Continue WELIREG until disease progression or unacceptable toxicity.

WELIREG should be taken at the same time each day and may be taken with or without food.

Advise patients to swallow tablets whole. Do not chew, crush, or split WELIREG prior to swallowing.

If a dose of WELIREG is missed, it can be taken as soon as possible on the same day. Resume the regular daily dose schedule for WELIREG the next day. Do not take extra tablets to make up for the missed dose.

If vomiting occurs any time after taking WELIREG, do not retake the dose. Take the next dose on the next day.

### 2.2 Dosage Modifications for Adverse Reactions

Dosage modifications for WELIREG for adverse reactions are summarized in Table 1.

The recommended dose reductions are:

- First dose reduction: WELIREG 80 mg orally once daily
- Second dose reduction: WELIREG 40 mg orally once daily
- Third dose reduction: Permanently discontinue

**Table 1: Recommended Dosage Modifications for Adverse Reactions**

Adverse Reaction	Severity	Dosage Modification
Anemia	Hemoglobin $< 8$ g/dL or transfusion indicated	<ul style="list-style-type: none"><li>• Withhold until hemoglobin <math>\geq 8</math> g/dL.</li></ul>

[see Warnings and Precautions (5.1)]		<ul style="list-style-type: none"> <li>Resume at the same or reduced dose; or discontinue depending on the severity of anemia.</li> </ul>
	Life-threatening or urgent intervention indicated	<ul style="list-style-type: none"> <li>Withhold until hemoglobin <math>\geq 8\text{g/dL}</math>.</li> <li>Resume at a reduced dose or permanently discontinue.</li> </ul>
Hypoxia [see Warnings and Precautions (5.2)]	Decreased oxygen saturation with exercise (e.g., pulse oximeter $<88\%$ )	<ul style="list-style-type: none"> <li>Consider withholding until resolved.</li> <li>Resume at the same dose or at a reduced dose depending on the severity of hypoxia.</li> </ul>
	Decreased oxygen saturation at rest (e.g., pulse oximeter $<88\%$ or $\text{PaO}_2 \leq 55\text{ mm Hg}$ ) or urgent intervention indicated	<ul style="list-style-type: none"> <li>Withhold until resolved.</li> <li>Resume at reduced dose or discontinue depending on the severity of hypoxia.</li> </ul>
	Life-threatening or recurrent symptomatic hypoxia	<ul style="list-style-type: none"> <li>Permanently discontinue.</li> </ul>
Other Adverse Reactions [see Adverse Reactions (6)]	Grade 3	<ul style="list-style-type: none"> <li>Withhold dosing until resolved to <math>\leq</math> Grade 2.</li> <li>Consider resuming at a reduced dose (reduce by 40 mg).</li> <li>Permanently discontinue upon recurrence of Grade 3.</li> </ul>
	Grade 4	<ul style="list-style-type: none"> <li>Permanently discontinue.</li> </ul>

### 3 DOSAGE FORMS AND STRENGTHS

Tablets: 40 mg, blue, oval shaped, film-coated, debossed with “177” on one side and plain on the other side.

### 4 CONTRAINDICATIONS

None.

### 5 WARNINGS AND PRECAUTIONS

#### 5.1 Anemia

WELIREG can cause severe anemia that can require blood transfusion.

Monitor for anemia before initiation of, and periodically throughout, treatment with WELIREG. Transfuse patients as clinically indicated. For patients with hemoglobin  $<8\text{g/dL}$ , withhold WELIREG until  $\geq 8\text{g/dL}$ , then resume at the same or reduced dose or permanently discontinue WELIREG, depending on the severity of anemia. For life threatening anemia or when urgent intervention is indicated, withhold WELIREG until hemoglobin  $\geq 8\text{g/dL}$ , then resume at a reduced dose or permanently discontinue WELIREG [see Dosage and Administration (2.2)].

#### von Hippel-Lindau (VHL) disease

In LITESPARK-004, decreased hemoglobin occurred in 93% of patients and 7% had Grade 3 events [see Adverse Reactions (6.1)]. Median time to onset of anemia was 31 days (range: 1 day to 8.4 months).

The safety of erythropoiesis stimulating agents (ESAs) for treatment of anemia in patients with VHL disease treated with WELIREG has not been established. Randomized controlled trials in patients with cancer receiving myelosuppressive chemotherapy with ESAs have shown that ESAs increased the risks of death and serious cardiovascular reactions, and decreased progression-free survival and/or overall survival. See the prescribing information for ESAs for more information.

#### Advanced Renal Cell Carcinoma (RCC)

In LITESPARK-005, decreased hemoglobin occurred in 88% of patients and 29% had Grade 3 events [see Adverse Reactions (6.1)]. Median time to onset of anemia was 29 days (range: 1 day to 16.6

months). Of the patients with anemia, 22% received transfusions only, 20% of patients received ESAs only and 12% received both transfusion and ESAs.

#### Pheochromocytoma or Paraganglioma (PPGL)

In LITESPARK-015, anemia occurred in 96% of patients and 22% had Grade 3 events [see *Adverse Reactions* (6.1)]. Median time to onset of anemia was 29 days (range: 1 day to 22.1 months). Of the patients with anemia, 20% received transfusions only, 26% received ESAs only, and 6% received both transfusion and ESAs.

### **5.2 Hypoxia**

WELIREG can cause severe hypoxia that may require discontinuation, supplemental oxygen, or hospitalization [see *Dosage and Administration* (2.2)].

Monitor oxygen saturation before initiation of, and periodically throughout, treatment with WELIREG. For decreased oxygen saturation with exercise (e.g., pulse oximeter <88% or  $P_{aO_2} \leq 55$  mm Hg), consider withholding WELIREG until pulse oximetry with exercise is greater than 88%, then resume at the same dose or at a reduced dose. For decreased oxygen saturation at rest (e.g., pulse oximeter <88% or  $P_{aO_2} \leq 55$  mm Hg) or urgent intervention indicated, withhold WELIREG until resolved and resume at a reduced dose or discontinue. For life-threatening hypoxia or for recurrent symptomatic hypoxia, permanently discontinue WELIREG [see *Dosage and Administration* (2.2)].

Advise patients to report signs and symptoms of hypoxia immediately to a healthcare provider.

#### von Hippel-Lindau (VHL) disease

In LITESPARK- 004, hypoxia occurred in 1.6% of patients [see *Adverse Reactions* (6.1)].

#### Advanced Renal Cell Carcinoma (RCC)

In LITESPARK- 005, hypoxia occurred in 15% of patients and 10% had Grade 3 events [see *Adverse Reactions* (6.1)]. Of the patients with hypoxia, 69% were treated with oxygen therapy. Median time to onset of hypoxia was 30.5 days (range: 1 day to 21.1 months).

#### Pheochromocytoma or Paraganglioma (PPGL)

In LITESPARK-015, hypoxia occurred in 13% of patients and 10% had Grade 3 hypoxia [see *Adverse Reactions* (6.1)]. Median time to onset of hypoxia was 35 days (range: 6 days to 23.9 months). Of the patients with hypoxia, 67% were treated with oxygen therapy.

### **5.3 Embryo-Fetal Toxicity**

Based on findings in animals, WELIREG can cause fetal harm when administered to a pregnant woman. In an animal reproduction study, oral administration of belzutifan to pregnant rats during the period of organogenesis caused embryo-fetal lethality, reduced fetal body weight, and fetal skeletal malformations at maternal exposures  $\geq 0.2$  times the human exposures (AUC) at the recommended dose of 120 mg daily.

Advise pregnant women and females of reproductive potential of the potential risk to the fetus. Advise females of reproductive potential to use effective non-hormonal contraception during treatment with WELIREG and for 1 week after the last dose, since WELIREG can render some hormonal contraceptives ineffective [see *Drug Interactions* (7.1)]. Advise male patients with female partners of reproductive potential to use effective contraception during treatment with WELIREG and for 1 week after the last dose [see *Use in Specific Populations* (8.1, 8.3)].

## **6 ADVERSE REACTIONS**

The following clinically significant adverse reactions are discussed elsewhere in the labeling:

- Anemia [see *Warnings and Precautions* (5.1)]
- Hypoxia [see *Warnings and Precautions* (5.2)]

## 6.1 Clinical Trials Experience

Because clinical trials are conducted under widely varying conditions, adverse reaction rates observed in the clinical trials of a drug cannot be directly compared to rates in the clinical trials of another drug and may not reflect the rates observed in practice.

### von Hippel-Lindau (VHL) disease

#### *LITESPARK-004*

The safety of WELIREG was evaluated in an open-label clinical trial (LITESPARK-004) in 61 patients with VHL disease who had at least one measurable solid tumor localized to the kidney [see *Clinical Studies* (14.1)]. Patients received WELIREG 120 mg orally once daily until disease progression or unacceptable toxicity. The median duration of exposure to WELIREG was 68 weeks (range: 8.4 to 104.7 weeks).

Serious adverse reactions occurred in 15% of patients who received WELIREG, including anemia, hypoxia, anaphylaxis reaction, retinal detachment, and central retinal vein occlusion (1 patient each).

Permanent discontinuation of WELIREG due to adverse reactions occurred in 3.3% of patients. Adverse reactions which resulted in permanent discontinuation of WELIREG were dizziness and opioid overdose (1.6% each).

Dosage interruptions of WELIREG due to an adverse reaction occurred in 39% of patients. Adverse reactions which required dosage interruption in >2% of patients were fatigue, decreased hemoglobin, anemia, nausea, abdominal pain, headache, and influenza-like illness.

Dose reductions of WELIREG due to an adverse reaction occurred in 13% of patients. The most frequently reported adverse reaction which required dose reduction was fatigue (7%).

The most common (≥25%) adverse reactions, including laboratory abnormalities, that occurred in patients who received WELIREG were decreased hemoglobin, fatigue, increased creatinine, headache, dizziness, increased glucose, and nausea.

Table 2 summarizes the adverse reactions reported in patients treated with WELIREG in LITESPARK-004.

**Table 2: Adverse Reactions Occurring in ≥10% of Patients Who Received WELIREG in LITESPARK-004**

Adverse Reaction	WELIREG (n=61)	
	All Grades <sup>†</sup> (%)	Grade 3-4 (%)
<b>General</b>		
Fatigue <sup>†</sup>	64	5
<b>Nervous system</b>		
Headache <sup>†</sup>	39	0
Dizziness <sup>†</sup>	38	0
<b>Gastrointestinal</b>		
Nausea	31	0
Constipation	13	0
Abdominal pain <sup>†</sup>	13	0
<b>Eye Disorders</b>		
Visual impairment <sup>†</sup>	21	3.3
<b>Infections</b>		
Upper respiratory tract infection <sup>†</sup>	21	0
<b>Respiratory, Thoracic and Mediastinal</b>		
Dyspnea	20	1.6
<b>Musculoskeletal and Connective Tissue</b>		

Arthralgia	18	0
Myalgia	16	0
<b>Vascular</b>		
Hypertension	13	3.3
<b>Metabolism and Nutrition</b>		
Weight increased	12	1.6

\*Graded per NCI CTCAE v4.0

† Includes other related terms

‡Includes visual impairment, vision blurred, central retinal vein occlusion and retinal detachment

Table 3 summarizes the laboratory abnormalities in LITESPARK-004.

**Table 3: Select Laboratory Abnormalities (≥10%) That Worsened from Baseline in Patients Who Received WELIREG in LITESPARK-004**

Laboratory Abnormality*	WELIREG (n=61)	
	Grades 1-4 %	Grades 3-4 %
<b>Hematology</b>		
Decreased hemoglobin	93	7
Decreased leukocytes	11	0
<b>Chemistry</b>		
Increased creatinine	64	0
Increased glucose	34	4.9
Increased ALT	20	0
Increased AST	16	0
Decreased calcium (corrected)	10	0
Decreased phosphate	10	1.6

\*The denominator used to calculate the rate is based on all patients in the safety analysis population.

## Advanced Renal Cell Carcinoma (RCC)

### LITESPARK-005

The safety of WELIREG was evaluated in a randomized, active-controlled study (LITESPARK- 005) in 732 patients with advanced RCC with a clear cell component that has progressed after prior PD-1 or PD-L1 checkpoint inhibitor and VEGF receptor targeted therapies [see *Clinical Studies (14.2)*]. Patients received 120 mg WELIREG (n=372) or 10 mg everolimus (n=360) orally once daily until disease progression or unacceptable toxicity. The median duration of exposure to WELIREG was 7.6 months (range 0.1 to 28.5 months).

Serious adverse reactions occurred in 38% of patients who received WELIREG. Serious adverse reactions in ≥2% of patients treated with WELIREG were hypoxia (7%), anemia (5%), pneumonia (3.5%), hemorrhage (3%), and pleural effusion (2.2%). Fatal adverse reactions occurred in 3.2% of patients who received WELIREG, including sepsis (0.5%) and hemorrhage (0.5%).

Permanent discontinuation of WELIREG due to adverse reactions occurred in 6% of patients. Adverse reactions which resulted in permanent discontinuation (≥0.5%) of WELIREG were hypoxia (1.1%), anemia (0.5%), and hemorrhage (0.5%).

Dosage interruptions of WELIREG due to an adverse reaction occurred in 39% of patients. Adverse reactions which required dosage interruption in ≥2% of patients were anemia (8%), hypoxia (5%), COVID-19 (4.3%), fatigue (3.2%), and hemorrhage (2.2%).

Dose reductions of WELIREG due to an adverse reaction occurred in 13% of patients. Adverse reactions which required dose reduction in ≥1% of patients were hypoxia (5%) and anemia (3.2%).

The most common ( $\geq 25\%$ ) adverse reactions, including laboratory abnormalities, that occurred in patients who received WELIREG were decreased hemoglobin, fatigue, musculoskeletal pain, increased creatinine, decreased lymphocytes, increased alanine aminotransferase, decreased sodium, increased potassium, and increased aspartate aminotransferase.

Table 4 summarizes the adverse reactions in LITESPARK-005.

**Table 4: Adverse Reactions ( $\geq 10\%$ ) in Patients with Advanced RCC Receiving WELIREG in LITESPARK-005**

Adverse Reaction	WELIREG (n=372)		Everolimus (n=360)	
	All Grades* (%)	Grade 3-4 (%)	All Grades* (%)	Grade 3-4 (%)
<b>General</b>				
Fatigue <sup>†</sup>	43	3.2	41	6
Edema <sup>†</sup>	20	0.5	23	0.6
<b>Musculoskeletal and Connective Tissue</b>				
Musculoskeletal Pain <sup>†</sup>	34	1.1	27	2.2
<b>Gastrointestinal</b>				
Nausea	17	0.5	11	0.3
Constipation	15	0	8	0
Vomiting	11	0.8	8	0.8
Diarrhea <sup>†</sup>	11	1.3	19	1.4
Abdominal Pain <sup>†</sup>	10	0.8	8	0.3
<b>Respiratory, Thoracic, and Mediastinal</b>				
Dyspnea <sup>†</sup>	16	1.6	16	2.5
Hypoxia	15	10	1.4	1.4
<b>Metabolism and Nutrition</b>				
Decreased Appetite	13	1.1	16	0
<b>Nervous Systems</b>				
Headache <sup>†</sup>	12	0.5	8	0.3
Dizziness <sup>†</sup>	11	0	1.9	0

\* Graded per NCI CTCAE v5.0

† Includes other related terms

Clinically relevant adverse reactions in  $<10\%$  of patients who received WELIREG in LITESPARK-005 included hemorrhage (9%) [including intracranial/cerebral hemorrhage (0.8%)], rash (8%), hypertension



(6%), visual impairment [including vision blurred (4%), visual acuity decreased (1.1%), visual impairment (0.5%), and retinal detachment (0.3%)] (6%) and increased weight (5%).

Table 5 summarizes the laboratory abnormalities in LITESPARK-005.

**Table 5: Select Laboratory Abnormalities (≥20%) That Worsened from Baseline In Patients with Advanced RCC who Received WELIREG in LITESPARK-005**

Laboratory Test*	WELIREG		Everolimus	
	All Grades <sup>†</sup> %	Grades 3-4 %	All Grades <sup>†</sup> %	Grades 3-4 %
<b>Hematology</b>				
Decreased hemoglobin	88	29	76	17
Decreased lymphocytes	34	8	53	20
<b>Chemistry</b>				
Increased creatinine	34	4.7	43	5.1
Increased alanine aminotransferase	32	2.2	40	1.1
Decreased sodium	31	1.6	36	0.8
Increased potassium	29	2.5	20	2.8
Increased aspartate aminotransferase	27	2.2	38	2
Decreased glucose	22	1.1	19	1.1
Decreased calcium	21	1.1	45	3.1

\* Each test incidence is based on the number of patients who had both baseline and at least one on-study laboratory measurement available WELIREG (range: 359 to 366 patients), and everolimus (range: 351 to 356 patients).

† Graded per NCI CTCAE v5.0

## Pheochromocytoma or Paraganglioma

### **LITESPARK-015**

The safety of WELIREG was evaluated in an open-label clinical trial (LITESPARK-015) in 72 patients with locally advanced, unresectable, or metastatic pheochromocytoma or paraganglioma (PPGL) [see *Clinical Studies* (14.3)]. Patients received WELIREG 120 mg orally once daily until disease progression or unacceptable toxicity.

The median duration of exposure to WELIREG was 20 months (range: 0.3 to 32.5 months).

Serious adverse reactions occurred in 36% of patients who received WELIREG. Serious adverse reactions occurring in ≥2% of patients treated with WELIREG were anemia and hypertension (4.2% each) and pyelonephritis, pneumonia, hypoxia, dyspnea and hemorrhage (2.8% each).

Permanent discontinuation of WELIREG due to adverse reactions occurred in 2 patients (2.8%). Adverse reactions which resulted in permanent discontinuation of WELIREG were increased alanine aminotransferase and paraparesis (1.4% each).

Dosage interruptions of WELIREG due to an adverse reaction occurred in 40% of patients. Adverse reactions which required dosage interruption in >3% of patients were hypoxia, nausea and fatigue (4.2% each).

Dose reductions of WELIREG due to an adverse reaction occurred in 14% of patients. The most frequently reported adverse reaction which required dose reduction was hypoxia (4.2%).

The most common (≥25%) adverse reactions, including laboratory abnormalities, that occurred in patients who received WELIREG were anemia, fatigue, musculoskeletal pain, decreased lymphocytes, increased alanine aminotransferase, increased aspartate aminotransferase, increased calcium, dyspnea, increased potassium, decreased leukocytes, headache, increased alkaline phosphatase, dizziness, and nausea.

Table 6 summarizes the adverse reactions reported in patients treated with WELIREG in LITESPARK-015.

**Table 6: Adverse Reactions Occurring in ≥10% of Patients with PPGL Who Received WELIREG in LITESPARK-015**

Adverse Reaction	WELIREG (n=72)	
	All Grades <sup>†</sup> (%)	Grade 3-4 (%)
<b>Blood and Lymphatic</b>		
Anemia	96	22
<b>General</b>		
Fatigue <sup>†</sup>	56	10
Edema <sup>†</sup>	24	0
<b>Musculoskeletal and Connective Tissue</b>		
Musculoskeletal pain <sup>†</sup>	56	6
Muscle spasms	13	0
Muscle weakness	13	2.8
<b>Respiratory, Thoracic, and Mediastinal</b>		
Dyspnea <sup>†</sup>	33	1.4
Cough	15	0
Hypoxia	13	10
Nasal congestion	10	0
<b>Nervous System</b>		
Headache	29	1.4
Dizziness <sup>†</sup>	26	2.8
Peripheral neuropathy <sup>†</sup>	13	0
<b>Gastrointestinal</b>		
Nausea	25	1.4
Constipation	24	1.4
Diarrhea	15	0
Abdominal Pain <sup>†</sup>	13	1.4
Vomiting	10	1.4
<b>Vascular Disorders</b>		
Hypertension <sup>†</sup>	21	13
Hypotension <sup>†</sup>	10	2.8
Hemorrhage <sup>†</sup>	10	2.8
<b>Infections</b>		
COVID-19	17	2.8
<b>Metabolism and Nutrition Disorders</b>		
Decreased appetite	14	2.8
<b>Investigations</b>		
Weight increased	13	7
<b>Cardiac Disorders</b>		
Arrhythmia <sup>†</sup>	11	2.8
Palpitations	10	0

\*Graded per NCI CTCAE v5.0

<sup>†</sup> Includes other related terms

Table 7 summarizes the laboratory abnormalities in LITESPARK-015.

**Table 7: Select Laboratory Abnormalities ( $\geq 20\%$ ) That Worsened from Baseline in Patients with PPGL Who Received WELIREG in LITESPARK-015**

Laboratory Abnormality	WELIREG (n=72)	
	All Grades %	Grades 3 or 4 %
<b>Hematology</b>		
Decreased hemoglobin	90	21
Decreased lymphocytes	54	14
Decreased leukocytes	30	0
Decreased neutrophils	24	1.4
Decreased platelets	21	1.4
<b>Chemistry</b>		
Increased ALT	51	4.2
Increased AST	42	4.2
Increased calcium	34	0
Increased potassium	31	2.8
Increased alkaline phosphatase	25	0
Increased creatinine	24	1.4
Decreased sodium	21	0

## 7 DRUG INTERACTIONS

### 7.1 Effects of Other Drugs on WELIREG

#### UGT2B17 or CYP2C19 Inhibitors

Monitor for anemia and hypoxia and reduce the dosage of WELIREG as recommended [see *Dosage and Administration* (2.2), *Warnings and Precautions* (5.1, 5.2), *Adverse Reactions* (6)].

Coadministration of WELIREG with inhibitors of UGT2B17 or CYP2C19 increases belzutifan exposure [see *Clinical Pharmacology* (12.3, 12.5)], which may increase the risk of adverse reactions of WELIREG.

### 7.2 Effect of WELIREG on Other Drugs

#### CYP3A4 Substrates

Avoid coadministration of WELIREG with sensitive CYP3A4 substrates, for which minimal decrease in concentration may lead to therapeutic failures of the substrate. If coadministration cannot be avoided, increase the sensitive CYP3A4 substrate dosage in accordance with its Prescribing Information.

Coadministration of WELIREG with CYP3A4 substrates decreases concentrations of CYP3A substrates [see *Clinical Pharmacology* (12.3)], which may reduce the efficacy of these substrates. The magnitude of this decrease may be more pronounced in patients who are dual UGT2B17 and CYP2C19 poor metabolizers [see *Clinical Pharmacology* (12.3)].

#### Hormonal Contraceptives

Coadministration of WELIREG with hormonal contraceptives may lead to contraceptive failure or an increase in breakthrough bleeding [see *Clinical Pharmacology* (12.3), *Use in Specific Populations* (8.3)].

## 8 USE IN SPECIFIC POPULATIONS

### 8.1 Pregnancy

#### Risk Summary

Based on findings in animal studies, WELIREG can cause fetal harm when administered to a pregnant woman. There are no available data on the use of WELIREG in pregnant women to inform the drug-associated risk. In an animal reproduction study, oral administration of belzutifan to pregnant rats during the period of organogenesis caused embryo-fetal lethality, reduced fetal body weight, and fetal skeletal malformations at maternal exposures  $\geq 0.2$  times the human exposure (AUC) at the recommended dose of

120 mg daily (*see Data*). Advise pregnant women and females of reproductive potential of the potential risk to a fetus.

The background risk of major birth defects and miscarriage for the indicated population is unknown. In the U.S. general population, the estimated background risk of major birth defects and miscarriage in clinically recognized pregnancies is 2–4% and 15–20%, respectively.

## Data

### *Animal Data*

In a pilot embryo-fetal development study, pregnant rats received oral doses of 6, 60, or 200 mg/kg/day of belzutifan during the period of organogenesis. Belzutifan caused embryo-fetal lethality at doses  $\geq 60$  mg/kg/day (approximately 1 time the human exposure at the recommended dose based on AUC). Reduced fetal body weights, fetal rib malformations, and reduced skeletal ossification occurred at doses of 6 and 60 mg/kg/day (approximately  $\geq 0.2$  times the human exposure at the recommended dose based on AUC).

## **8.2 Lactation**

### Risk Summary

There are no data on the presence of belzutifan or its metabolites in human milk or their effects on the breastfed child or on milk production. Because of the potential for serious adverse reactions in a breastfed child, advise women not to breastfeed during treatment with WELIREG and for 1 week after the last dose.

## **8.3 Females and Males of Reproductive Potential**

WELIREG can cause fetal harm when administered to a pregnant woman [*see Use in Specific Populations (8.1)*].

### Pregnancy Testing

Verify the pregnancy status of females of reproductive potential prior to initiating treatment with WELIREG.

### Contraception

#### *Females*

Advise females of reproductive potential to use effective non-hormonal contraception during treatment with WELIREG and for 1 week after the last dose. WELIREG can render some hormonal contraceptives ineffective [*see Drug Interactions (7.2)*].

#### *Males*

Advise males with female partners of reproductive potential to use effective contraception during treatment with WELIREG and for 1 week after the last dose.

### Infertility

Based on findings in animals, WELIREG may impair fertility in males and females of reproductive potential [*see Nonclinical Toxicology (13.1)*]. The reversibility of the effect on fertility is unknown.

## **8.4 Pediatric Use**

The safety and effectiveness of WELIREG have been established in pediatric patients aged 12 years and older for the treatment of locally advanced, unresectable, or metastatic pheochromocytoma or paraganglioma. Use of WELIREG in pediatric patients aged 12 years and older is supported by evidence from an adequate and well-controlled study of WELIREG in adults with additional pharmacokinetic data demonstrating that belzutifan exposure is predicted to be within range of that observed in adults, and that the course of locally advanced, unresectable, or metastatic pheochromocytoma or paraganglioma is sufficiently similar in adults and pediatric patients to allow extrapolation of data in adults to pediatric patients [*see Clinical Pharmacology (12.3)*, and *Clinical Studies (14.3)*].

The safety and effectiveness of WELIREG have not been established in pediatric patients younger than 12 years of age.

### 8.5 Geriatric Use

Of the 61 patients who received WELIREG for VHL in LITESPARK-004, 3.3% were ≥65 years old [see *Clinical Studies (14.1)*]. Clinical trials of WELIREG in patients with VHL did not include sufficient numbers of patients aged 65 and older to determine whether they respond differently from younger patients.

Of the 372 patients who received WELIREG for advanced RCC in LITESPARK-005, 62% of patients were younger than 65 years, 28% of patients were 65 to 74 years, and 10% were 75 years and over. No overall difference in efficacy was reported between patients who were ≥65 years of age and younger patients. Dose interruptions occurred in 48% of patients ≥65 years of age and in 34% of younger patients. Dose reductions occurred in 18% of patients ≥65 years of age and in 10% of younger patients.

Of the 72 patients who received WELIREG for PPGL in LITESPARK-015, 13% were ≥65 years old and 4.2% were ≥75 years old [see *Clinical Studies (14.1)*]. Clinical trials of WELIREG in patients with PPGL did not include sufficient numbers of patients aged 65 and older to determine whether they respond differently from younger patients. Other reported clinical experience has not identified differences in responses between the elderly and younger patients.

### 8.6 Renal Impairment

No dosage modification of WELIREG is recommended in patients with renal impairment including end-stage renal disease. For patients with severe renal impairment (eGFR 15-29 mL/min estimated by MDRD), monitor for increased adverse reactions and modify the dosage as recommended [see *Dosage and Administration (2.4)*, *Clinical Pharmacology (12.3)*].

### 8.7 Hepatic Impairment

No dosage modification of WELIREG is recommended in patients with mild [total bilirubin ≤ upper limit of normal (ULN) and aspartate aminotransferase (AST) > ULN or total bilirubin >1 to 1.5 x ULN and any AST] or moderate (total bilirubin within range of >1.5 x ULN and ≤ 3 x ULN and any AST or Child-Pugh B) hepatic impairment. WELIREG has not been studied in patients with severe hepatic impairment (total bilirubin >1.5 x ULN and any AST). For patients with moderate and severe hepatic impairment, monitor for increased adverse reactions and modify the dosage as recommended [see *Dosage and Administration (2.4)*, *Clinical Pharmacology (12.3)*].

### 8.8 Dual UGT2B17 and CYP2C19 Poor Metabolizers

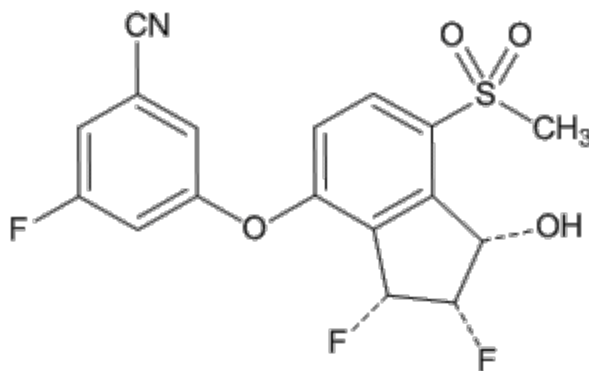
Patients who are dual UGT2B17 and CYP2C19 poor metabolizers have higher belzutifan exposures, which may increase the risk of adverse reactions of WELIREG. Monitor for increased adverse reactions in patients who are dual UGT2B17 and CYP2C19 poor metabolizers [see *Warnings and Precautions (5)*, *Adverse Reactions (6)*, *Clinical Pharmacology (12.5)*].

## 10 OVERDOSAGE

There is no specific treatment for WELIREG overdose. In cases of suspected overdose, withhold WELIREG and institute supportive care. Grade 3 hypoxia occurred at dosages of 120 mg twice a day and Grade 4 thrombocytopenia occurred at dosages of 240 mg once daily (approximately 2 times the recommended dosage).

## 11 DESCRIPTION

Belzutifan is an inhibitor of hypoxia-inducible factor-2α (HIF-2α). The chemical name of belzutifan is 3-[[[(1S,2S,3R)-2,3-Difluoro-2,3-dihydro-1-hydroxy-7-(methylsulfonyl)-1H-inden-4-yl]oxy]-5-fluorobenzonitrile. The molecular formula is C<sub>17</sub>H<sub>12</sub>F<sub>3</sub>NO<sub>4</sub>S and the molecular weight is 383.34 Daltons. The chemical structure is:



Belzutifan is a white to light brown powder that is soluble in acetonitrile, dimethoxyethane, and acetone, sparingly soluble in ethyl acetate, very slightly soluble in isopropanol and toluene, and insoluble in water.

WELIREG is supplied as blue, film-coated tablets for oral use containing 40 mg of belzutifan together with croscarmellose sodium, hypromellose acetate succinate, magnesium stearate, mannitol, microcrystalline cellulose, and silicon dioxide, as inactive ingredients. In addition, the film-coating contains FD&C Blue #2 aluminum lake, polyethylene glycol, polyvinyl alcohol, talc, titanium dioxide.

## 12 CLINICAL PHARMACOLOGY

### 12.1 Mechanism of Action

Belzutifan is an inhibitor of hypoxia-inducible factor 2 alpha (HIF-2 $\alpha$ ). HIF-2 $\alpha$  is a transcription factor that plays a role in oxygen sensing by regulating genes that promote adaptation to hypoxia. Under normal oxygen levels, HIF-2 $\alpha$  is targeted for ubiquitin-proteasomal degradation by VHL protein. Lack of functional VHL protein results in stabilization and accumulation of HIF-2 $\alpha$ . Upon stabilization, HIF-2 $\alpha$  translocates into the nucleus and interacts with hypoxia-inducible factor 1 beta (HIF-1 $\beta$ ) to form a transcriptional complex that induces expression of downstream genes, including genes associated with cellular proliferation, angiogenesis, and tumor growth. Belzutifan binds to HIF-2 $\alpha$ , and in conditions of hypoxia or impairment of VHL protein function, belzutifan blocks the HIF-2 $\alpha$ -HIF-1 $\beta$  interaction, leading to reduced transcription and expression of HIF-2 $\alpha$  target genes. In vivo, belzutifan demonstrated anti-tumor activity in mouse xenograft models of renal cell carcinoma.

### 12.2 Pharmacodynamics

Reductions in plasma levels of erythropoietin (EPO) were observed to be dose- and exposure-dependent at dosages up to 120 mg once daily. The maximum EPO suppression occurred following 2 weeks of consecutive dosing of WELIREG (mean percent decrease from baseline of approximately 60%). Mean EPO levels gradually returned to baseline values after 12 weeks of treatment.

The incidence of Grade 3 anemia increased with higher belzutifan exposure in patients with baseline hemoglobin levels <12 g/dL [see *Warnings and Precautions* (5.1)].

#### Cardiac Electrophysiology

At the recommended dosage, WELIREG does not cause large mean increases (i.e., >20 msec) in the QT interval.

### 12.3 Pharmacokinetics

The  $C_{\max}$  and AUC of belzutifan increase proportionally over a dose range of 20 mg to 120 mg (0.17 to 1 times the approved recommended dose). The estimated geometric mean steady-state (CV%)  $C_{\max}$  is 1.5  $\mu\text{g/mL}$  (45%) and  $\text{AUC}_{0-24\text{h}}$  is 20  $\mu\text{g}\cdot\text{hr/mL}$  (62%). Steady state is reached after approximately 3 days.

#### Absorption

The median  $T_{\max}$  occurs at 1 to 2 hours after WELIREG administration.

#### *Effect of Food*

A high-fat, high-calorie meal (total calories approximately 1000 kcal, 56 g fat, 55 g carbohydrate, and 31 g protein) delayed  $T_{\max}$  by approximately 2 hours with no clinically significant effect on  $C_{\max}$  and AUC of belzutifan.

#### Distribution

The estimated mean (CV%) volume of distribution is 119 L (28%) Plasma protein binding of belzutifan is 45%. The blood-to-plasma concentration ratio of belzutifan is 0.88.

#### Elimination

The estimated mean (CV%) clearance is 6 L/hr (58%) and the mean elimination half-life is 14 hrs.

#### *Metabolism*

Belzutifan is primarily metabolized by UGT2B17 and CYP2C19 and to a lesser extent by CYP3A4 [see *Clinical Pharmacology* (12.5)].

#### *Excretion*

Following a single oral dose of radiolabeled belzutifan, approximately 49.6% of the dose was excreted in urine and 51.7% in feces (primarily as inactive metabolites).

#### Specific Populations

Patients who are poor metabolizers of UGT2B17 and CYP2C19 had higher belzutifan AUC [see *Clinical Pharmacology* (12.5)].

No clinically significant differences in the pharmacokinetics of belzutifan were observed based on age (15 to 90 years), sex, ethnicity (non-Hispanic, Hispanic), race (White (76%), Black (5%), Asian (15%), Native American, Pacific Islander), or body weight (40 to 166 kg).

#### *Pediatric patients*

The exposure of belzutifan in pediatric patients 12 years and older is predicted to be within range of that observed in adults at the recommended dosage.

#### *Patients with Renal Impairment*

No clinically significant differences in the mean belzutifan exposure were observed between subjects with normal renal function and those with mild (eGFR 60-89 mL/min) or moderate renal impairment (GFR 30-59 mL/min) and those with end-stage renal disease (eGFR <15 mL/min) requiring dialysis.

#### *Patients with Hepatic Impairment*

No clinically significant differences in the mean belzutifan exposure were observed between subjects with normal liver function (total bilirubin and AST  $\leq$  ULN), and those with mild hepatic impairment (total bilirubin  $\leq$  ULN and AST  $>$  ULN or total bilirubin  $>1$  to  $1.5 \times$  ULN and any AST). Belzutifan exposure (AUC) increased by 1.5-fold in patients with moderate hepatic impairment (Child-Pugh B) compared to subjects with normal hepatic function. Patients with severe hepatic impairment have not been studied.

#### Drug Interaction Studies

##### *Clinical Studies and Model-Informed Approaches*

**Effect of Belzutifan on CYP3A Substrates:** Coadministration of WELIREG 120 mg once daily with midazolam (a sensitive CYP3A4 substrate) decreased the midazolam AUC by 40% and the  $C_{\max}$  by 34%. Midazolam AUC is predicted to decrease up to 70% in patients with higher belzutifan concentrations (e.g., dual poor metabolizers) [see *Clinical Pharmacology* (12.5)].

##### *In Vitro Studies*

**Cytochrome P450 (CYP) Enzymes:** Belzutifan does not inhibit CYP1A2, CYP2B6, CYP2C8, CYP2C9, CYP2C19, CYP2D6, or CYP3A4.

Belzutifan does not induce CYP1A2 or CYP2B6.

**Transporter Systems:** Belzutifan is a substrate of P-gp, OATP1B1, and OATP1B3, but is not a substrate of BCRP.

Belzutifan inhibits MATE2K. Belzutifan does not inhibit P-gp, BCRP, OATP1B1, OATP1B3, OAT1, OAT3, OCT2, or MATE1.

## 12.5 Pharmacogenomics

Patients who are UGT2B17, CYP2C19, or dual UGT2B17 and CYP2C19 poor metabolizers are estimated to have 2.5-, 1.3-, or 3.2-fold higher belzutifan steady state AUC<sub>0-24h</sub>, respectively compared to patients who are UGT2B17 normal (extensive) metabolizers and CYP2C19 non-poor (ultrarapid, rapid, normal, and intermediate) metabolizers [see *Use in Specific Populations* (8.8)].

UGT2B17 poor metabolizers who are homozygous for the UGT2B17\*2 allele have no UGT2B17 enzyme activity. CYP2C19 poor metabolizers (such as \*2/\*2, \*3/\*3, \*2/\*3) have significantly reduced or absent CYP2C19 enzyme activity. Approximately 15% of White, 6% of Black or African American, and up to 77% of certain Asian populations are UGT2B17 poor metabolizers. Approximately 2% of White, 5% of Black or African American, and up to 19% of certain Asian populations are CYP2C19 poor metabolizers. Approximately 0.4% of White, 0.3% of Black or African American, and up to 15% of certain Asian populations are dual UGT2B17 and CYP2C19 poor metabolizers.

## 13 NONCLINICAL TOXICOLOGY

### 13.1 Carcinogenesis, Mutagenesis, Impairment of Fertility

Carcinogenicity studies have not been conducted with belzutifan.

Belzutifan was not mutagenic in the in vitro bacterial reverse mutation (Ames) assay. Belzutifan was not clastogenic in either an in vitro micronucleus assay or an in vivo rat bone marrow micronucleus assay.

Fertility studies in animals have not been conducted with belzutifan. In repeat-dose toxicity studies up to 3-month duration, belzutifan-related findings included degeneration/atrophy of testes and hypospermia and cellular debris of the epididymis in rats administered  $\geq 2$  mg/kg/day (approximately 0.1 times the human exposure at the recommended dose of 120 mg daily). Findings in testes and epididymis were associated with decreased sperm count and motility and abnormal sperm morphology at  $\geq 6$  mg/kg/day (approximately 0.2 times the human exposure at the recommended dose of 120 mg daily) and did not reverse by the end of the recovery period. Belzutifan had no adverse effects on female reproductive organs in repeat-dose toxicity studies up to 3-month duration; however, belzutifan caused embryo-fetal lethality (post-implantation loss) in pregnant rats given oral doses  $\geq 60$  mg/kg/day (approximately 1 time the human exposure at the recommended dose based on AUC) during the period of organogenesis [see *Use in Specific Population* (8.1)].

## 14 CLINICAL STUDIES

### 14.1 von Hippel-Lindau (VHL) disease

The efficacy of WELIREG was evaluated in LITESPARK-004 (NCT03401788), an open-label clinical trial in 61 patients with VHL-associated RCC diagnosed based on a VHL germline alteration and with at least one measurable solid tumor localized to the kidney as defined by response evaluation criteria in solid tumors (RECIST) v1.1. Enrolled patients had other VHL-associated tumors including CNS hemangioblastomas and pNET. CNS hemangioblastomas and pNET in these patients were diagnosed based on the presence of at least one measurable solid tumor in brain/spine or pancreas, respectively, as defined by RECIST v1.1 and identified by IRC. The study excluded patients with metastatic disease. Patients received WELIREG 120 mg orally once daily until disease progression or unacceptable toxicity.

The study population characteristics were: median age 41 years [range 19-66 years], 3.3% age 65 or older; 53% male; 90% were White, 3.3% were Black or African-American, 1.6% were Asian, and 1.6% were Native Hawaiian or other Pacific Islander; 82% had an ECOG PS of 0, 16% had an ECOG PS of 1, and 1.6% had an ECOG PS of 2; and 84% had VHL Type I Disease. The median diameter of RCC target lesions per central independent review committee (IRC) was 2.2 cm (range 1-6.1). Median time from initial radiographic diagnosis of VHL-associated RCC tumors that led to enrollment on LITESPARK-004 to



the time of treatment with WELIREG was 17.9 months (range 2.8-96.7). Seventy-seven percent of patients had prior surgical procedures for RCC.

The major efficacy endpoint for the treatment of VHL-associated RCC was objective response rate (ORR) measured by radiology assessment using Response Evaluation Criteria In Solid Tumors (RECIST) v1.1 as assessed by IRC. Additional efficacy endpoints included duration of response (DoR), and time to response (TTR).

Table 8 summarizes the efficacy results for VHL-associated RCC in LITESPARK-004.

**Table 8: Efficacy Results (IRC assessment) for LITESPARK-004 for VHL-Associated RCC**

Efficacy Outcome Measure	WELIREG n=61
<b>Objective Response Rate, % (n)</b> (95% CI)	49% (30)* (36, 62)
Complete response	0%
Partial response	49%
<b>Duration of Response</b>	
Median in months (range)	Not reached (2.8+, 22+)
% (n) with DoR ≥ 12 months	56% (17/30)

\* All patients with a response were followed for a minimum of 18 months from the start of treatment.

+ Denotes ongoing response.

For VHL-associated RCC, median TTR was 8 months (range 2.7, 19).

Table 9 summarizes the efficacy results for VHL-associated pNET or CNS hemangioblastomas in LITESPARK-004.

**Table 9. Efficacy Results (IRC assessment) for LITESPARK-004 for VHL-Associated Subgroups with CNS Hemangioblastomas or pNET**

Endpoint	Patients with CNS Hemangioblastomas n=24*	Patients with pNET n=12*
<b>Objective Response Rate, % (n)</b> (95% CI)	63%, (15) (41, 81)	83% (10) (52, 98)
Complete response	4% (1)	17% (2)
Partial response	58% (14)	67% (8)
<b>Duration of Response</b>		
Median in months (range)	Not reached (3.7+, 22+)	Not reached (11+, 19+)
% (n) with DoR ≥12 months	73% (11/15)	50% (5/10)

\* Number of patients with measurable solid lesions, based on IRC assessment.

+ Denotes ongoing response.

For VHL-associated CNS hemangioblastomas, TTR was 3.1 months (range 2.5, 11). For VHL-associated pNET, median TTR was 8.1 months (range 2.7, 11).

Decreases in size of CNS hemangioblastoma-associated peri-tumoral cysts and syringes were observed.

## 14.2 Advanced Renal Cell Carcinoma (RCC)

The efficacy of WELIREG was evaluated in LITESPARK-005 (NCT04195750), an open-label, randomized, active-controlled clinical trial in 746 patients with unresectable, locally advanced or metastatic clear cell RCC that progressed following PD-1 or PD-L1 checkpoint inhibitor and VEGF receptor targeted therapies either in sequence or in combination.

Patients could have received up to 3 prior treatment regimens and were required to have measurable disease per RECIST v1.1. Patients were randomized in a 1:1 ratio to receive 120 mg WELIREG or 10 mg everolimus orally once daily until disease progression or unacceptable toxicity. Randomization was stratified by IMDC risk categories (favorable versus intermediate versus poor) and number of prior VEGF receptor targeted therapies (1 versus 2-3). Patients were evaluated radiologically at Week 9 from the date of randomization, then every 8 weeks through Week 49, and every 12 weeks thereafter.

The study population characteristics were: median age 63 years [range 22 to 90 years], 42% age 65 or older; 78% male; 79% White; 12% Asian; 1% Black or African American; 11% Hispanic or Latino; 44% ECOG performance status 0 and 55% ECOG performance status 1. Prior therapies: 13% patients had 1 prior line of therapy, 43% had 2 prior lines of therapy and 43% had 3 prior lines of therapy; 49% received 2 to 3 prior VEGF receptor targeted therapies. Patient distribution by IMDC risk categories was 22% favorable, 66% intermediate, and 12% poor. Common sites of metastasis in patients were 65% lung, 59% lymph nodes, and 49% bone.

The major efficacy endpoints were Progression Free Survival (PFS) measured by BICR using RECIST v1.1 and Overall Survival (OS). Additional efficacy endpoint included objective response rate (ORR) by BICR using RECIST v1.1.

The trial demonstrated a statistically significant improvement in PFS for patients randomized to WELIREG compared with everolimus. Table 10 and Figure 1 summarize the efficacy results for LITESPARK-005.

**Table 10: Efficacy Results for Advanced RCC (IRC assessment) for LITESPARK-005**

Efficacy Outcome Measure	WELIREG n=374	Everolimus n=372
Progression-Free Survival (PFS)		
Number of events, n (%)	257 (69%)	262 (70%)
Progressive disease	234 (63%)	222 (60%)
Death	23 (6%)	40 (11%)
Median in months (95% CI) *	5.6 (3.9, 7.0)	5.6 (4.8, 5.8)
Hazard ratio † (95% CI)	0.75 (0.63, 0.90)	
p-Value ‡	0.0008	
Overall Survival (OS)		
Number of events, n (%)	254 (68%)	259 (70%)
Median in months (95% CI)	21 (18, 24)	18 (16, 22)
Hazard ratio † (95% CI)	0.92 (0.77, 1.10)	
p-Value§	NS	
Confirmed Objective Response Rate		
Number of patients with measurable disease at baseline	373	364
ORR % (n) (95% CI)	22% (82) (18, 27)	4% (13) (2, 6)
Complete response	3% (10)	0% (0)
Partial response	19% (72)	4% (13)
p-Value¶	<0.0001	

\* From product-limit (Kaplan-Meier) method for censored data

† Based on the stratified Cox proportional hazard model.

‡ One-sided p-Value based on stratified log-rank test compared with the significance boundary of 0.0021.

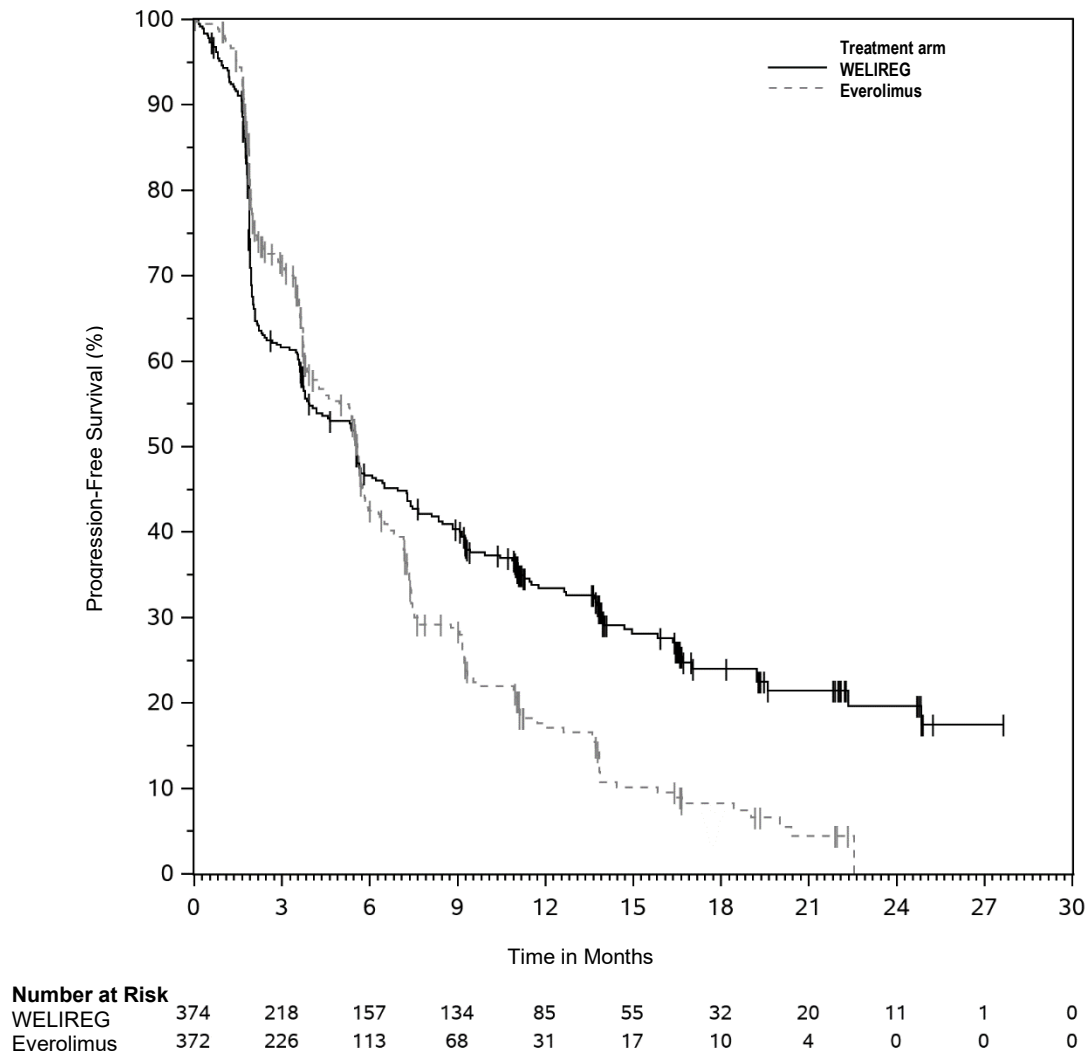
§ Based on stratified log-rank test.

¶ One-sided p-value based on stratified Miettinen and Nurminen (M&N) method.

NS – not statistically significant

Among the 82 patients treated with WELIREG who achieved a confirmed response based on BICR per RECIST 1.1, 25 (30%) patients had a duration of response ≥12 months.

**Figure 1: Kaplan-Meier Curve for Progression-Free Survival in LITESPARK-005**



### 14.3 Pheochromocytoma or Paraganglioma

The efficacy of WELIREG was evaluated in LITESPARK-015 (NCT04924075), an open-label, multi-cohort clinical trial in 72 patients in Cohort A1 who had measurable disease verified by BICR per RECIST v1.1, documented histopathological diagnosis of pheochromocytoma or paraganglioma (PPGL), locally advanced or metastatic disease that was not amenable to surgery or curative treatment, and adequately controlled blood pressure (defined as BP <150/90 mm Hg, <135/85 mm Hg for adolescents) with no change in antihypertensive medications for patients with concomitant hypertension for at least 2 weeks prior to start of study treatment. Patients with carcinomatous meningitis were excluded. Patients received WELIREG 120 mg orally once daily until disease progression or unacceptable toxicity.

The study population characteristics were: median age 52 years [range 22 to 77 years], 13% age 65 or older; 58% male; 93% White; 4.2% Black or African-American; 1.4% Asian; 6% Hispanic or Latino; 54% had an ECOG PS of 0 and 46% had an ECOG PS of 1. The median number of prior therapies was 1: (range: 0 to 5). A total of 50% of patients received prior chemotherapy, 44% received prior radiopharmaceuticals, and 25% received prior VEGF-TKIs. No patients had a history of VHL disease.

The major efficacy outcome measure for the treatment of locally advanced PPGL was objective response rate (ORR) measured by BICR using RECIST v1.1. Additional efficacy outcome measures were duration

of response (DOR), time to response (TTR), and the proportion of patients who had a reduction in at least one antihypertensive medication by at least 50% maintained for at least six months.

Table 11 summarizes the efficacy results for PPGL in LITESPARK-015.

**Table 11: Efficacy Results in Patients with PPGL in LITESPARK-015**

Efficacy Outcome Measure	WELIREG n=72
<b>Confirmed Objective Response Rate <sup>*,†</sup></b>	
ORR, % (95% CI)	26% (17, 38)
<b>Duration of Response<sup>*</sup></b>	
Median in months (95% CI) <sup>‡</sup>	20.4 (8.3, NR)
Range	5.6+, 29.6+
% with duration ≥ 12 months	53%
<b>Reduction in at least one antihypertensive medication by at least 50% maintained for at least 6 months</b>	
Number of patients	19
Proportion of patients (95% CI) <sup>¶§</sup>	32% (20, 45)

\* Based on BICR.

† All responses were partial responses.

‡ Based on Kaplan-Meier estimates.

¶ Calculated using the Clopper-Pearson method.

§ Based on the number of patients who were on antihypertensive medications at baseline (N=60).

NR = not reached

+ = Denotes ongoing response.

Data cut-off: October 23, 2024

For PPGL, the median TTR was 11.0 months (range 1.7 to 24.8).

## 16 HOW SUPPLIED/STORAGE AND HANDLING

### How Supplied

WELIREG tablets are supplied as 40 mg blue, oval shaped, film-coated, debossed with “177” on one side and plain on the other side, available in:

- bottles of 90 tablets with child-resistant closure: NDC 0006-5331-01.

The bottle also contains two desiccant canisters. Do not eat.

### Storage and Handling

Store at 20°C to 25°C (68°F to 77°F), excursions permitted between 15°C and 30°C (59°F and 86°F) [see USP Controlled Room Temperature].

## 17 PATIENT COUNSELING INFORMATION

Advise the patient to read the FDA-approved patient labeling (Medication Guide).

### Anemia

Inform patients that WELIREG can cause severe anemia that may require blood transfusions and that red blood cell levels will be monitored routinely during treatment. Advise patients to contact their healthcare provider if the patient experiences any symptoms suggestive of anemia [see *Warnings and Precautions* (5.1)].

### Hypoxia

Inform patients that WELIREG can cause severe hypoxia that may require discontinuation, supplemental oxygen, or hospitalization; and that oxygen levels will be monitored routinely during treatment. Advise patients to contact their healthcare provider if the patient experiences any symptoms suggestive of hypoxia [see *Warnings and Precautions* (5.2)].

### Embryo-Fetal Toxicity

- Advise pregnant women and females of reproductive potential of the risk to a fetus. Advise females to inform their healthcare provider of a known or suspected pregnancy [see *Warnings and Precautions (5.3) and Use in Specific Population (8.1)*].
- Advise females of reproductive potential to use effective non-hormonal contraception during treatment with WELIREG and for 1 week after the last dose [see *Use in Specific Populations (8.3)*].
- Advise male patients with female partners of reproductive potential to use effective contraception during treatment with WELIREG and for 1 week after the last dose [see *Use in Specific Populations (8.3)*].

#### Lactation

Advise females not to breastfeed during treatment with WELIREG and for 1 week after the last dose [see *Use in Specific Populations (8.2)*].

#### Infertility

Advise male and female patients that WELIREG may impair fertility [see *Use in Specific Populations (8.3)*].

#### Dosage and Administration

Instruct patients to take their dose of WELIREG at the same time each day (once daily). Advise patients WELIREG can be taken with or without food. Each tablet should be swallowed whole [see *Dosage and Administration (2.1)*].

---

Manufactured for: Merck Sharp & Dohme LLC  
Rahway, NJ 07065, USA

For patent information: [www.msd.com/research/patent](http://www.msd.com/research/patent)

Copyright © 2021-2025 Merck & Co., Inc., Rahway, NJ, USA, and its affiliates.  
All rights reserved.

uspi-mk6482-t-2505r004